

2018 One

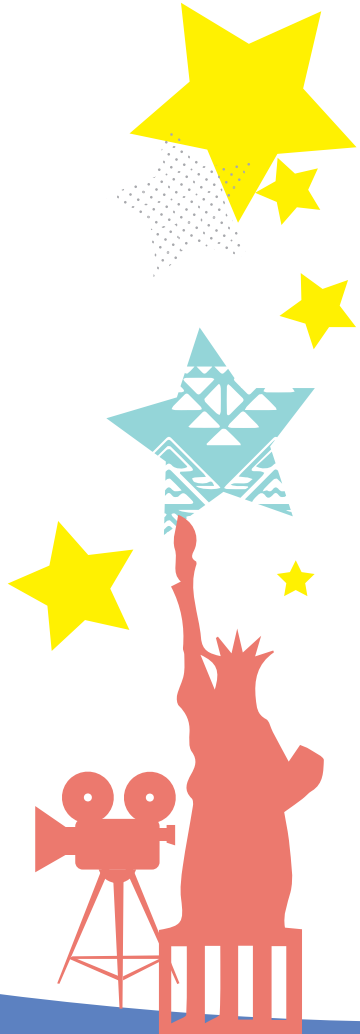
World

Festa

in Iwate

The theme for this year's  
One World Festa

**TRY**  
International



2018. **12.8** Sat 10:00~16:00

Venue: Aiina, 4th and 5th floors  
(Iwate Prefectural Citizen's Cultural Exchange Center)

Enquiries

Iwate International Association  
5th Floor, International Exchange Center, Aiina, 1-7-1 Morioka  
Morioka City, Iwate Prefecture 020-0045

TEL 019-654-8900  
FAX 019-654-8922  
Mail event-ia@iwate-ia.or.jp  
URL <https://iwate-ia.or.jp/>



\*Aiina doesn't have a car park. Please use the nearby paid car park.



公益財団法人 岩手県国際交流協会  
Iwate International Association

●Organisers: Iwate International Association ●Co-host: Japan International Cooperation Agency (JICA) Tohoku ●Support: Iwate Winter Resort Committee ●Support (TBC): Iwate Prefecture, Iwate Board of Education, Morioka City, Morioka Board of Education, Iwate Nippo, Asahi Newspaper's Morioka Office, Yomiuri Newspaper's Morioka Office, Kahoku Newspaper Morioka Office, Morioka Times, Iwanichi Newspaper, NHK Morioka Broadcast Station, Iwate Broadcasting, TV Iwate, Menkoi TV, Iwate Asahi TV, FM Iwate



# 2018 One World Festa in Iwate

# Programme

## 4 F

### Studio Aiina & Iwate Citizen's Plaza World Activity



Learn games and dances from around the world from Iwate's international residents! There will be games from Africa, card games in English, and even an area where you can try kicking a rugby ball through a goal. Whether you're there to try it out or just there to watch, we can't wait to have fun with you!

## 4 F&5F

### Iwate Citizen's Plaza & Galleria Aiina World Area



Travel the world, right here in Iwate! Foreign residents will be here to talk about their home country's culture, life, and languages. There will also other booths set up: make Shrinky Dink charms in Amharic (a language from Ethiopia), play games from the Philippines, chat about Ecuador, and more.

## 5 F

### Galleria Aiina World Spotlight



Visit these rooms to take a step into another country. You can enjoy an English-language environment at the American movie theater, listen to old tales and music from Indonesia through a traditional form of puppet theater called "Wayang Kulit," and even take your picture wearing traditional clothing. It'll be like you've taken a trip abroad!

International Exchange Center, Conference Room 501

### World Cafe & Lunch



Discover foods from different countries along with Japanese food. The favorite foods of our foreign residents will be on display, as well special dishes from a chef! In the café area, enjoy (slightly strange?) foreign desserts in a buffet style (fit as many as you can on one plate). There will also be a corner where you can try Iwate food along with foreign participants.

### International Exchange Center Kids Corner



Enjoy learning about different seasonal festivals and traditions from around the world through crafts and games: Easter in the spring, the ocean in the summer, moon-viewing in the autumn, and Christmas in the winter.

Galleria Aiina

### Japanese Culture



Don't forget traditional Japanese culture! Find a calligraphy corner where the instructor will teach you how to write your own original calligraphy. There will also be an artisan who will show off Nanbu Cast Ironware (a local craft), origami, and more.

Galleria Aiina

### Workshop Corner



Did you know that smartphones have linked Africa and Japan together? What about how Olympic athletes have brought together Japan and South Korea? There will be workshops on these themes and more, so join us for an opportunity for learning and dialogue.

\*International exchange organizations will also put up displays!

### Special service for supporting members



Supporting members of the International Association can get one drink and some foreign snacks at the café corner on the 5th floor.

## Related events

### YOU School Festival & One World Festa & ODENSE Festival

🕒 10th November(Sat);13:30-16:00 & 11th November(Sun);10:00-16:00

📍 Kitakami Lifelong Learning Center & Kitakami Development Building special corner

### International Fair in HANAMAKI

🕒 2nd December (Sun) 10:00 – 15:00

📍 Hanamaki International Exchange Hall